



# EyeCheck®

MCJ Inc. 6019 Fincham Drive Suite 3.  
Rockford, Illinois, 61108 Tel: 815.966.0196 Fax: 815.966.0187  
WWW.EYECHECK.COM

## Non-invasive Drug Screening for Impairment

EyeCheck® Pupillometer  
has been peer reviewed and  
published as a proven method.



## Customer Benefits

- FDA approved and Peer reviewed
- Non-invasive
- Portable
- No contact with body fluids
- Non gender specific
- Saves time and money
- Pass/Fail, immediate results

Used by:  
Probation's,  
Drug Courts,  
Law Enforcement,  
Private Industry &  
Military  
World wide

Presented at the  
Scientific Program American Academy of Optometry  
Drug Impairment in a County Probation Program  
San Diego California 2002

Recognized by  
The Australian College of Biomedical Sciences  
15th World Congress on Medical Law. 2004 Sydney, AU

Presented to  
The World Police Medical Officers  
Clinical Forensics Medicine. 2005  
Dunblane, Scotland



Continue with Next Scan

Record Tools

Open Record

Print Record

Import Records

Export Records



Exit Program

Application Tools

Reports

Maintenance

## Subject Data

ID: 10022

Name: BI, BI

Gender: Female

Age: 31

Date: 3/2/2006

Time: 12:04 PM

## Comments:

Meds

## Test Type

Probable Impairment

**EYECHECK®** pupillometer is a lightweight, hand-held instrument that measures absolute pupil dynamics to detect drug impairment with immediate results.

**EYECHECK®** gives you the opportunity to check for impairment anytime and anywhere. Eliminating the cost of unnecessary toxicology, when results are negative. Dramatically reducing your lab and administrative fees.

**EYECHECK®** is a cost effective, portable, reusable and non-invasive tool for assessing human impairment.

**NO BASE-LINE NEEDED!**

The screening process takes minutes per subject with immediate **PASS/FAIL** results.

## EyeCheck® Data

- Date /time stamped
- Archived for easy retrieval
- Tracking for multiple use
- And more

## Warranty

- 12 Months limited, Parts & Labor
- One year software up-dates

## Minimum Computer Requirements:

- Platform-PC with Pentium 3, AMD® or Celeron® processor
- Operating system-MS Windows® XP
- 80 GB Hard Drive
- Memory-512 MB RAM/better
- I/O port. DB9, or USB with adaptor
- CD/CD-RW for software installation

**Made in the U.S.A.**

Copyright 2005, All Rights Reserved, MCJ Inc.



## **I-SIMS™**

# **Interactive Satellite Impairment Monitoring Station™**

**The I-SIMS kiosk is a real time, non-invasive pass/fail drug detection screening with finger/photo identification system. I-SIMS facilitates fully interactive contact sessions between the officer and the offender.**

**I-SIMS will provide cost containment measures in the following ways:**

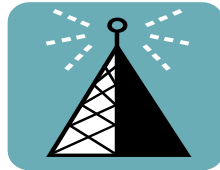
- **Promotes sound supervision practices**
- **Provides court ordered drug screening**
- **Early intervention responds to non-compliant offenders**
- **Provides caseload management assistance**
- **Saves on travel, time, and administrative costs, which will enhance officer safety**
- **Allows coverage in place with geographical difficulties**
- **I-SIMS can be obtained as a turn key system to meet your needs**



**MCJ, Inc.  
6019 Fincham Drive  
Rockford, IL 61107**

**V: 815.966.0196  
F: 815.966.0187**

**Website:  
[WWW.EYECHECK.COM](http://WWW.EYECHECK.COM)**



### Control Room

- **The Control Room features two-way real time interactive communication via VPN internet**
- **Two-way voice interactivity**
- **Camera is one-way visual to the control room**
- **Downloadable audio instructions for the offender to communicate with officer**
- **Printing capabilities: Instructions/notes to offenders from the officer, uploading of additional forms**

### Summary:

**Combines drug screening with a fully interactive remote satellite reporting station!**

### I-SIMS

- **EyeCheck® pupillometer, reliable Pass/Fail drug impairment screening**
- **PosiScan™ encrypted fingerprint scanner and photo identification system**
- **Features include a : touch screen monitor, paper scanner/fax, printer, one-way video and two-way audio intrigrate with the control room**
- **Customized to meet your needs**
- **Merges video, audio, and data streaming technologies into a single application**
- **Face to face conversations without having to leave your office**

# Chemical/Biological Detection Software

for the **MCJ-EyeCheck™** Pupillometer

Within seconds of exposure for most  
Chemical Agents  
Biological Agents

Designed  
for  
Military, Police, Fire and First Responders

EyeCheck Biological & Chemical Agent Detection v1.0

Continue with Next Scan

Biological & Chemical Agent Detection

Recent Tasks: Open Record, Print Record, Import Records, Export Records

Application Tools: Reports, Maintenance

Subject Data

ID: 0001  
Name: [Redacted]  
Gender: [Redacted]  
Age: [Redacted]  
Date: 07/13/2004  
Time: 11:12 AM

Comments:

Probable Cause for Biological/Chemical Agents:  
**NO**

Copyright 2004. All Rights Reserved. MCJ Inc.

EyeCheck Biological & Chemical Agent Detection v1.0

Continue with Next Scan

Biological & Chemical Agent Detection

Recent Tasks: Open Record, Print Record, Import Records, Export Records

Application Tools: Reports, Maintenance

Subject Data

ID: 0004  
Name: [Redacted]  
Gender: [Redacted]  
Age: [Redacted]  
Date: 07/14/2004  
Time: 11:33 AM

Comments:

Probable Cause for Biological/Chemical Agents:  
**YES**

Copyright 2004. All Rights Reserved. MCJ Inc.



**MCJ Inc.**  
6019 Fincham Drive  
Rockford Illinois 61108

Phone: 815.966.0196  
Fax: 815.966.0187  
Web Site: [www.eyecheck.com](http://www.eyecheck.com)

# **MCJ EyeCheck**

## **Biological & Chemical Agent Detection**



The detection of intoxication from any agent should be of interest to first responders in the case of a terrorist attack involving chemical/biological substances. The known effects of many such agents include symptoms of incapacitation similar to fatigue and intoxication. These symptoms could be easily detected by the MCJ-EyeCheck™ pupillometer. A portable instrument of this type could be a valuable tool in recognizing a terrorist attack at an early stage, albeit after its initial effects, but possibly in time for effective countermeasures.

Biological agents such as Ricin, Anthrax, Bubonic Plague, Smallpox, Agent Orange, Ebola, Botulism along with others can gain access into the body by a carrier. Such as: inhaled by dust or vapors, absorption through the skin (insect, animal, etc.) by ingestion via our food source. In most types of biological agents the pupils become dilated and fixed to light stimuli. Usually these can be detected prior to any outward physical signs are present.

Chemical agents are poisons such as: Sarin, Tabun GA, Soman (GD), and VX. Most gasses have been developed as insecticides at the turn of the century. The effects with some of these gasses on the Central Nervous System will cause the pupils to be constricted or “pin pointed” with little or no reaction to light stimuli.



**Normal Pupils**



**Pinpointed Pupils**