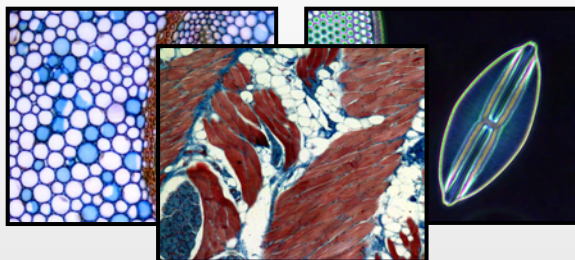


Digital Imaging Solutions for Microscopy



PixeLINK offers a line of digital cameras and software to support high-performance microscopic imaging.

- Easy to Use
- Cost Effective
- Fast Live-Video Preview
- FireWire Interface
- 1.3 to 6.6 Megapixel Resolutions
- Color
- PixeLINK Capture Software Included
- TWAIN & Direct Show Compatible.

Well suited to brightfield applications, PixeLINK cameras provide excellent color fidelity across a range of resolutions. Connected by Fire Wire and enabled by software, PixeLINK cameras are designed with productivity in mind. Live video previews are available for focusing and sample positioning. Images and video files can be captured quickly over the FireWire interface making PixeLINK cameras ideal for high-volume image capture applications.

PixeLINK Capture

A high-performance image-capture application with a time-saving, yet easy-to-use interface.

PixeLINK Capture Standard Edition is a real-time, interactive application for PixeLINK Cameras. Designed for microscopy documentation, it allows you to control your PixeLINK camera, see a live preview, capture images and video clips, and make measurements, all with an intuitive "What You See Is What You Get" interface.

As well as camera control and image capture, *PixeLINK Capture SE* also includes thumbnail previews of stored images, image enhancement functions and measurement features.

Camera and application settings can be saved and instantly recalled at a later time, saving you time and increasing your image capture speed. The settings include camera features, illumination corrections and measurement calibrations for specific microscope objectives.

An extensive list of keyboard shortcuts are provided to accelerate the image capture process. The software also works with the PixeLINK footswitch for hands-free operation.

PixeLINK Capture SE can be used as a stand-alone application or as a fully functional TWAIN interface with many 3rd party software applications. The TWAIN interface has the same user defined settings as the stand-alone application so its easy to move from one to the other.

Features & Benefits

- Real time preview for sample positioning and focusing
- Separate capture settings to set image file size
- Image file capture
- Video file capture
- Measurement capabilities including
 - Intensity profiles along a horizontal line
 - Point & Count
 - Angle, calliper, circle (from 3 pts)
 - Total and average length of joined line segments
 - Area and perimeter length of a polygon
 - Area and perimeter of a closed shape (grain)
 - Scale marks
 - Grid and circular ring overlays
- Full control of camera features
- Video capture & playback with time lapse
- Flat Field Correction (FFC)
- Thumbnail viewer
- Image processing filters
- User defined presets
- MS Access Image database

For more information, contact:

Linden Bucks Technology Supplies Sdn. Bhd.
28A Jalan Mega Mendung, Bandar Park,
Off 5th Mile Jalan Kelang Lama
58200 Kuala Lumpur
MALAYSIA
Tel: +60-3-79832663 Fax: +60-3-79845137
Email: lbts@lindenbucks.com
www.lindenbucks.com

PixeLINK

3030 Conroy Road, Ottawa, ON Canada K1G 6C2
<http://www.pixelink.com>



Capture SE has a menu system similar to most Windows applications, making it easy to navigate.

The Standard toolbar contains standard functions such as New, Open, Save and Print.

The Image Processing toolbar allows you to make changes to both streaming video and captured images that alter the way images are displayed and rendered.

The Imaging control Panel groups all the controls used in the image capture process together. It contains 5 sub-panels; Capture Control, Time Lapse Imaging, Camera Control, Image Orientation and Capture Options. Combined, these sub-panels contain powerful tools and functions needed to capture images in microscopy applications.

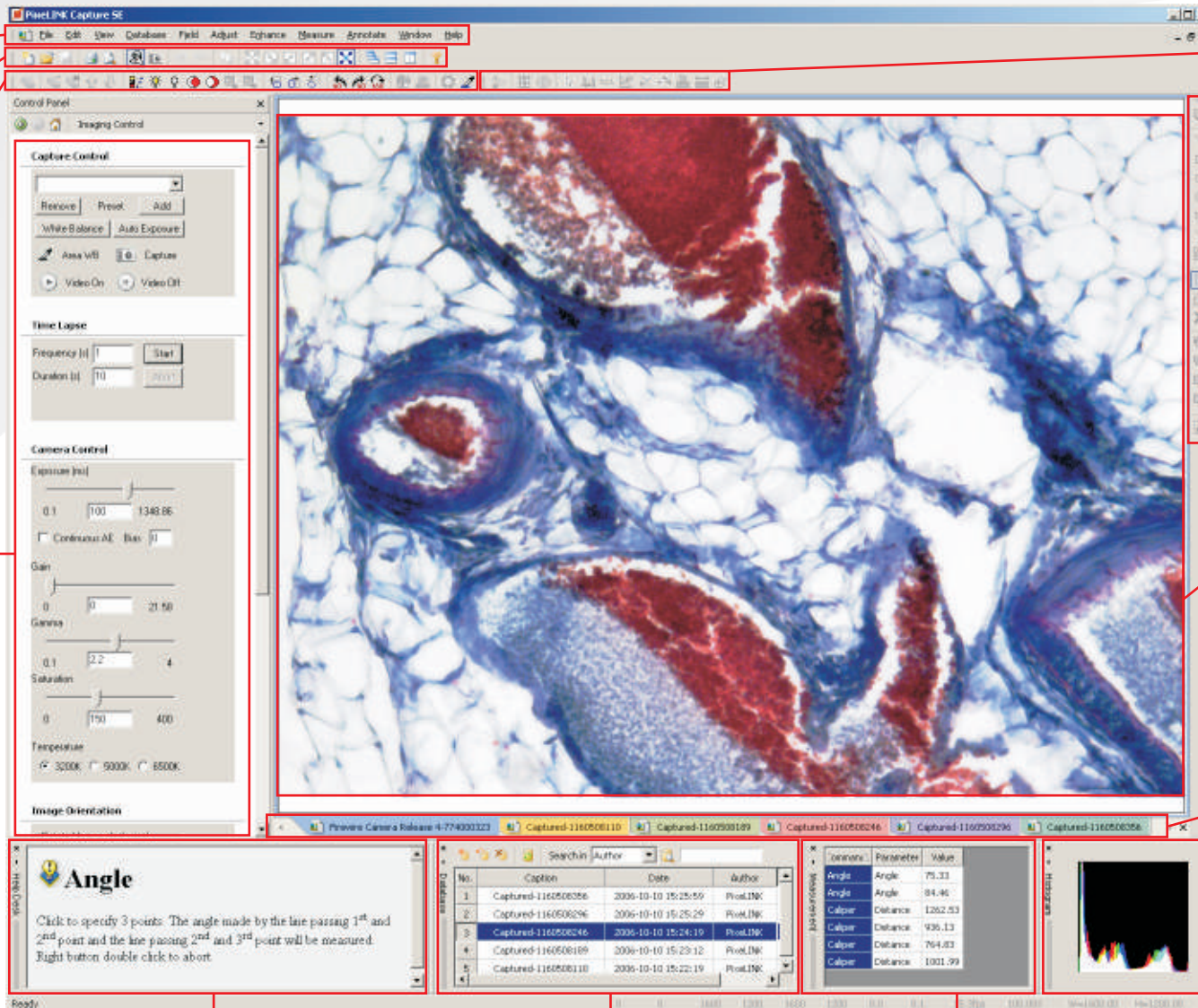
The Image Measurement toolbar provides a rich set of tools used to take measurements of elements within a captured image, and saves both image and measurement data together.

The Annotation toolbar provides all the tools necessary to markup images with comments, shapes and diagrams for collaborative purposes.

The Live Preview window displays either a captured image or video stream from your PixeLINK camera.

Image Tabs provide a convenient method of switching between captured images or the video stream.

The Histogram window displays the dynamic range for either the video stream or the active captured image.



The Help Desk window provides information on all the tools in Capture SE that require more than a single mouse click.

The Database window displays a list of all the images added to the built-in database in Capture SE. This database facilitates the archiving and retrieval of captured images.

The Measurement Results window holds and displays the measured parameters for the selected image.

- Powerful, Easy to Use and Cost Effective
- Capture and save still images and AVI video clips
- Free Video Training @ www.pixelink.com
- FireWire Interface
- Color/Monochrome
- 1.3 to 6.6 Megapixel
- ROI Sub-Windowing
- Direct Show Compatible
- Windows XP and 2000

Camera Model >

PL-A662

PL-B621MF

PL-B681CF

PL-B622CF

PL-B623CF

PL-B686MF

PL-B686CF

Camera Specifications	PL-A662	PL-B621MF	PL-B681CF	PL-B622CF	PL-B623CF	PL-B686MF	PL-B686CF
Color / Mono	Color	Mono	Color	Color	Color	Mono	Color
Resolution	1280 x 1024	1280 x 1024	1280 x 1024	1600 x 1200	2048 x 1536	3000 x 2208	3000 x 2208
Frame Rate at Full Res.	12	30	27	20	12	5	5
Sensor Type	CMOS	CMOS	CMOS	CMOS	CMOS	CMOS	CMOS
Lens Format	C 1/2"	C 1/2"	C 2/3"	C1/2"	C 1/2"	C 1"	C 1"
Pixel Pitch	6 µm	5.2 µm	6.7 µm	4.2 µm	3.2 µm	3.5 µm	3.5 µm
Sensor Diagonal	11.01 mm	8.52 mm	11.01 mm	8.40mm	8.19 mm	13.1 mm	13.1 mm
Bit Depth	8 or 10	8 or 10	8 or 10	8 or 10	8 or 10	8 or 10	8 or 10
Dynamic Range	54.6 dB	54.6 dB	60 dB	60 dB	60 dB	60 dB	60 dB
Shutter Type	Rolling	Rolling	Global	Rolling	Rolling	Rolling	Rolling
Trigger	S/W	S/W	S/W	S/W	S/W	S/W	S/W
Interface (FireWire)	6 pins x 2	6 pins x 2	6 pins x 2	6 pins x 2	6 pins x 2	6 pins x 2	6 pins x 2

Features	PL-A662	PL-B621MF	PL-B681CF	PL-B622CF	PL-B623CF	PL-B686MF	PL-B686CF
Gain, Frame Rate	Gain Only	•	•	•	•	•	•
Auto White Balance	•	•	•	•	•	•	•
Continuous Auto Exposure	•	•	•	•	•	•	•
Decimation - Averaging	•	•	•	•	•	•	•
Gamma	•	•	•	•	•	•	•
Saturation	•	•	•	•	•	•	•
Color Temperature	-	•	•	•	•	•	•
Time Lapse Capture	•	•	•	•	•	•	•

Software	PL-A662	PL-B621MF	PL-B681CF	PL-B622CF	PL-B623CF	PL-B686MF	PL-B686CF
PixelINK Capture	SE	SE	SE	SE	SE	SE	SE
SDK	Optional	Optional	Optional	Optional	Optional	Optional	Optional
TWAIN Compatible	-	•	•	•	•	•	•
Mac Compatible	OS X	OS X	OS X	OS X	OS X	OS X	OS X



PL-A662



PL-B6XXF